



服务热线

400-826-2012



ISO/TS16949:2016



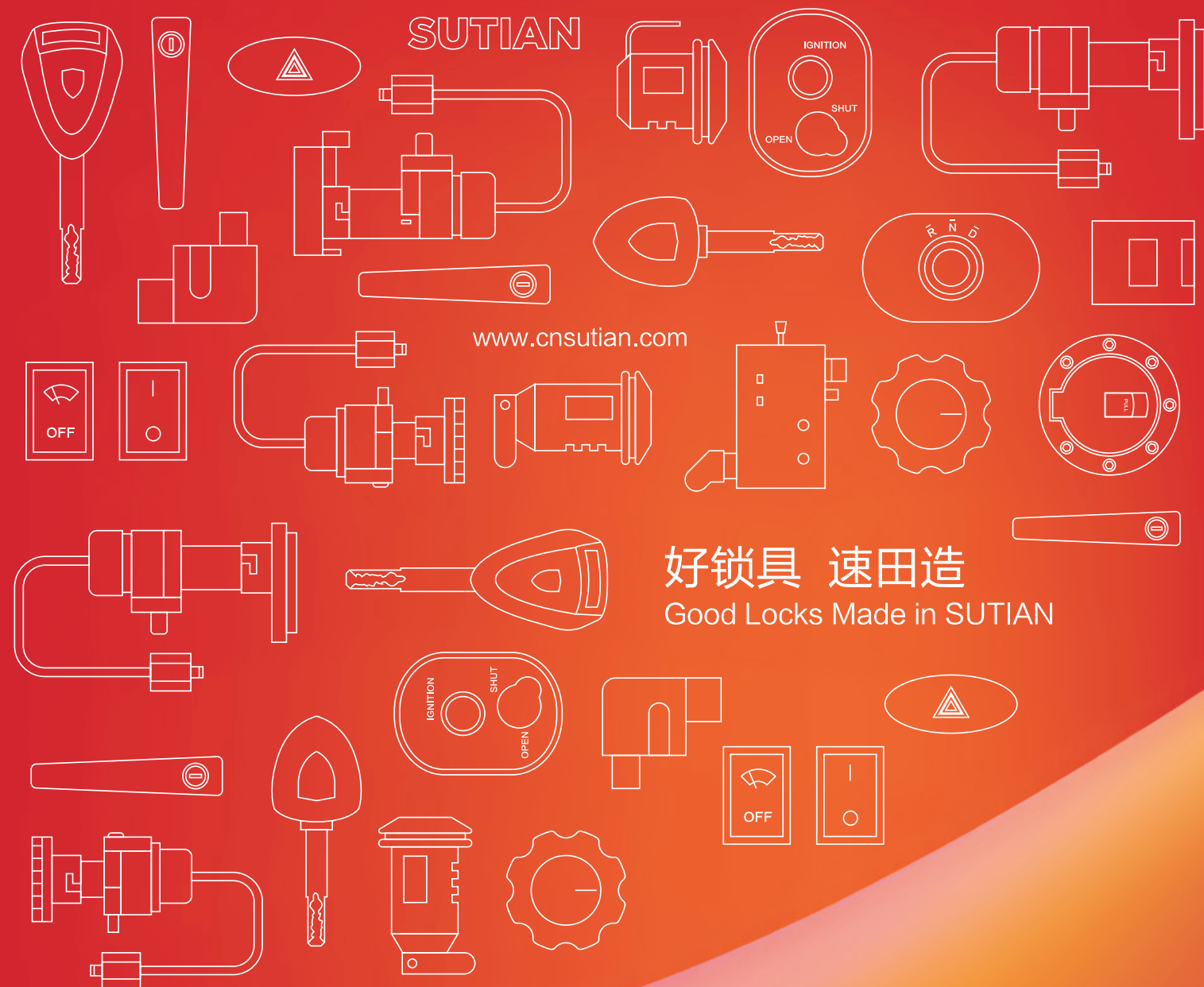
2018091112000578

瑞安市速田机车部件有限公司
RUIAN SUTIAN MOTORCYCLE
PARTS CO., LTD

浙江瑞安塘下镇场桥五方工业区
Wufang Industrial Zone Changqiao, Tangxia
Town, Ruian City, Zhejiang, China.

T +86-577-65299689 F +86-577-65299589
E 56259228@qq.com Q 56259228
W www.cnsutian.com

INSIA 全案策划 13157769992



**FOCUS ON SAFETY,
PRECISION AND
EXCELLENCE.**

专注安全、精细完美、追求卓越





规划中厂房效果

公司介绍

COMPANY INTRODUCTION

瑞安市速田机车部件有限公司是一家专业致力两轮、三轮、四轮新能源汽车全车锁、锁机构以及开关类等配件研发、生产、销售为一体的现代化企业。公司自创立之初就立下“做中国最好的新能源汽车配件”之目标，经过多年发展，现公司占地面积达10000余平方米，拥有员工300余人，生产流水线15条，全车锁芯月产量达40万套、锁机构月产量3万套、开关月产量10万套。我公司已顺利通过ISO/TS16949:2016国际质量体系认证和3C安全体系认证。

企业设备先进，技术条件精良，生产工艺成熟，测试设备齐全，采用自动化流水线生产。同时我们与国内大型主机厂家共享技术资源支持，确保了产品的研发的可靠性。我们还可以根据客户要求，生产符合客户需求的各类电动车配件。

速田企业，本着一流的设备、科学的管理、先进的技术为前提；以“质量至上，诚信经营”为企业理念；以完美无瑕的质量、经济实惠的价格、迅速周到的服务为保障。企业所生产的产品在市场上有很高的声誉，并与多家大型主机厂家建立了长久合作关系。

Ruian SUTIAN Motorcycle Parts Co., Ltd. is a professional modern company dedicated to the R&D, production and sales of two-wheeled, three-wheeled and four-wheel electric vehicle's lock latch mechanism and electronic switch .The company has aimed to be the best in the industry of locomotive parts since its establishment. After years of development, the company covers an area of more than 10000 square meters, with more than 300 employees, and 15 sets of pipeline. The mouth output of the whole car lock core is 400,000 sets, the mouth output of lock mechanism is 30,000 sets, and the daily output of switch is 100,000 sets.our company has passed the ISO/TS16949：2016 quality system certification and 3C safety system certification

Advanced equipment, sophisticated technical conditions, mature production technology, complete testing equipment, the use of automatic pipeline production.At the same time, we share technical resources with domestic mainframe manufacturers to ensure the reliability of the R&D of the product.We can also produce all kinds of electric vehicle parts in accordance with the needs and requirements of customers.

SUTIAN takes first-class equipment, scientific management and advanced technology as the premise;Takes "quality first, honest management" as the enterprise idea;and takes perfect quality, affordable prices, rapid and thoughtful service as the guarantee.The products produced by the company have a high reputation on the market, and a long-term cooperative relationship with many mainframe manufacturers has been established.

生产及质检能力

CAPACITY IN PRODUCTION AND QUALITY INSPECTION

工欲善其事必先利其器。我们通过完整的操作流程和严格的质量控制体系，以系统化、规范化、标准化的运作，确保长期稳定地向市场提供高品质的产品。

First, a worker must sharpen his tool first if he wants to do well. To systematize and standardize through a complete operation process and strict quality control system. Standardized operation to ensure long-term and stable supply of high quality products to the market.



公司在推崇人本管理的同时，不断强化管理制度的建设，运用现代化管理手段和平台实施高效、稳定的生产运作管理。良好的工作环境、系统完善的专业知识培训、丰富多彩的文体活动，生产部以最朴素的情怀，为员工提供最广阔的发展空间，通过提高员工的职业技能和综合素质提升企业核心竞争力，使员工和企业共同成长。

The company has been constantly strengthening the construction of management system besides the management of human resources, and modern management means and platform are adopted to implement efficient and stable production operation management. Good working environment, systematic and perfect professional knowledge training, rich and colorful cultural activities, production department has provided employees with the broadest space for development with the most simple feelings, And the core competitiveness of enterprises is enhanced by improving employee's professional skills and comprehensive qualities, so that employees and enterprises can grow together

我们始终贯彻“诚信兴业、品质卓越、顾客满意、稳步发展”的质量方针，恪守顾客至上，质量第一的原则，按照ISO/TS16949：2016技术规范和要求建立、健全和持续改进质量管理体系。

We always adhere to the quality policy of "good faith, excellent quality, customer satisfaction and steady development", adhere to the principle of customer first and quality first, and the quality management system has been established and perfected in accordance with ISO / TS16949:2016 Technical specifications and requirements.





技术研发 TECHNICAL RESEARCH AND DEVELOPMENT

凭借敏锐的行业洞察力和持续的研发努力，公司在各方面的领军地位得到进一步巩固，包括配件系统设计及面向未来的解决方案。

The company's leadership position in all areas has been further consolidated with its keen industry insight and continuous efforts in R & D. Including the design of lock and security system of switch as well as future-oriented solutions.



创新研发 INNOVATIVE R & D

作为创新型科技企业，速田拥有一个充满朝气、高素质、年轻化、专业化的研发团队，为公司蓬勃发展提供源源不断的活力与动力。

As an innovative technology enterprise, SU TIAN is equipped with a vibrant, high quality, young and professional R & D team. for company's vigorous development provides a continuous stream of vitality and power.

开发流程 DEVELOPMENT PROCESS

通往不断优化应用方案、对产品进行分析及模拟，到最后具体的产品选择和安全系统的集成，我们始终陪伴着您。

A collection of optimizing application solutions continuously, analyzing and simulating products, as well as selecting specific products and safety system in the final stage.Well, we are always with you.

试验检测 TESTING

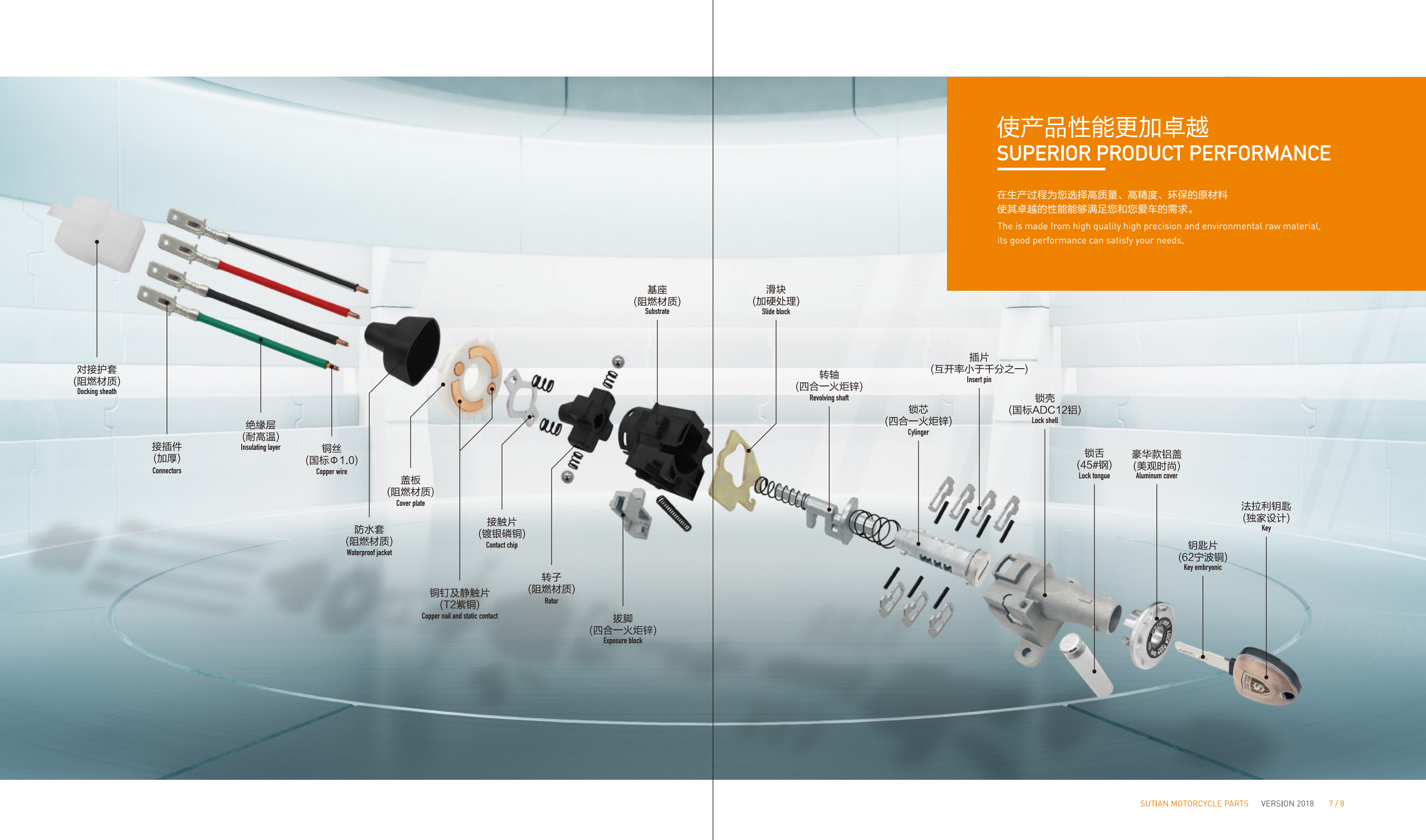
我们在制造过程中配备了能满足性能试验要求的实验室设备，试验能力能满足国家相关行业标准以及顾客产品的试验要求。

In the manufacturing process, we are equipped with laboratory equipment that can meet the requirements for performance testing, and the test capability meets the national standards of relevant industries testing requirements for the products.



使产品性能更加卓越 SUPERIOR PRODUCT PERFORMANCE

在生产过程为您选择高质量、高精度、环保的原材料
使其卓越的性能能够满足您和您爱车的需求。
The is made from high quality high precision and environmental raw material,
its good performance can satisfy your needs.



对接护套
(阻燃材质)
Docking sheath

接插件
(加厚)
Connectors

绝缘层
(耐高温)
Insulating layer

铜丝
(国标Φ1.0)
Copper wire

防水套
(阻燃材质)
Waterproof jacket

盖板
(阻燃材质)
Cover plate

铜钉及静触片
(T2紫铜)
Copper nail and static contact

接触片
(镀银磷铜)
Contact chip

转子
(阻燃材质)
Rotor

拨脚
(四合一火炬锌)
Exposure block

基座
(阻燃材质)
Substrate

滑块
(加硬处理)
Slide block

转轴
(四合一火炬锌)
Revolving shaft

锁芯
(四合一火炬锌)
Cylinder

插片
(互开率小于千分之一)
Insert pin

锁壳
(国标ADC12铝)
Lock shell

锁舌
(45#钢)
Lock tongue

豪华款铝盖
(美观时尚)
Aluminum cover

钥匙片
(62宁波铜)
Key embryonic

法拉利钥匙
(独家设计)
Key

LOCKS SERIES
面盖系列



KEY SERIES
钥匙系列



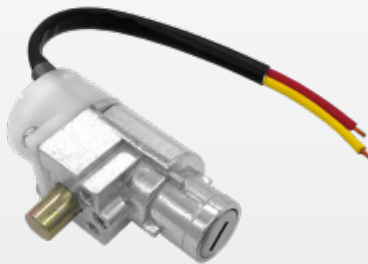
STD-001
LOCKS SERIES
小头单锁



STD-002
LOCKS SERIES
中头单锁



STD-003
LOCKS SERIES
大头单锁



STD-004
LOCKS SERIES
小头千鹤单锁



STD-005
LOCKS SERIES
大头千鹤单锁



STD-006
LOCKS SERIES
加长千鹤单锁



STD-007
LOCKS SERIES
世纪凌鹰单锁
越野者单锁
天红云单锁

LOCK 16mm
LOCK 20mm
LOCK 30mm



STD-008
LOCKS SERIES
冠军单锁

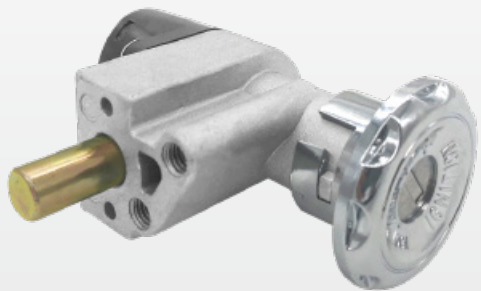
LOCK 27mm



STD-009
LOCKS SERIES

龙威单锁
霸道单锁

LOCK 18mm
LOCK 30mm



STD-011
LOCKS SERIES

传奇单锁

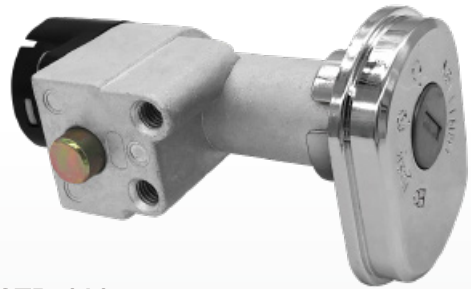
LOCK 26mm



STD-013
LOCKS SERIES

小沙单锁
游艇单锁

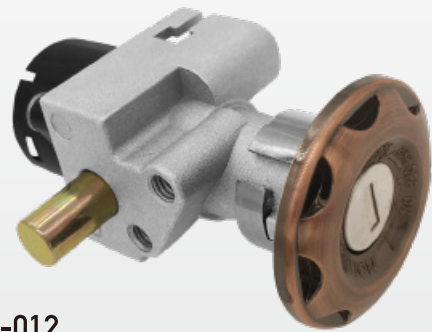
LOCK 12mm
LOCK 24mm



STD-010
LOCKS SERIES

旗舰普通单锁

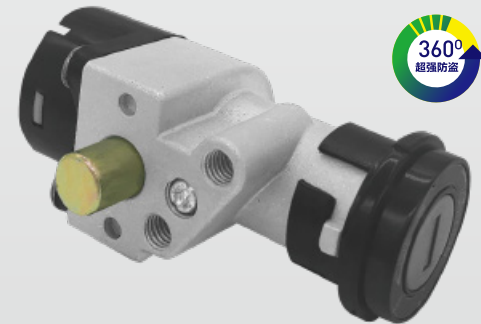
LOCK 18mm



STD-012
LOCKS SERIES

步步高单锁

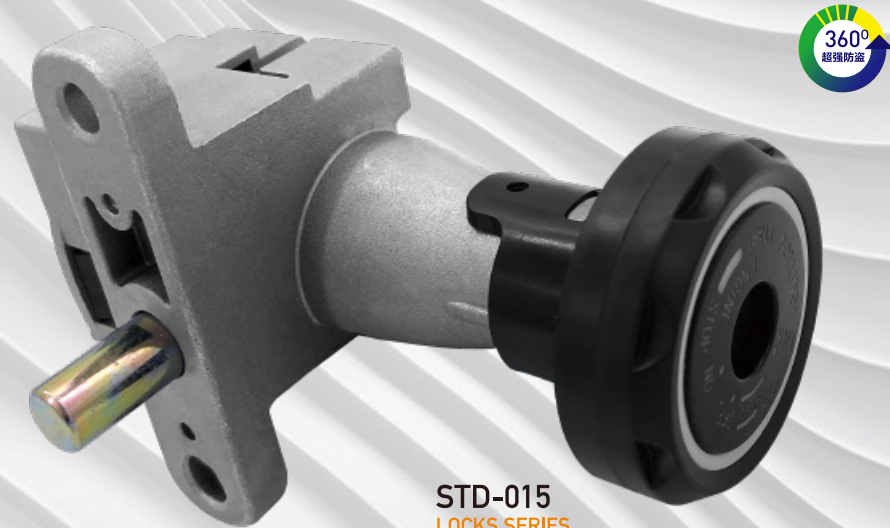
LOCK 18mm



STD-014
LOCKS SERIES

中沙单锁

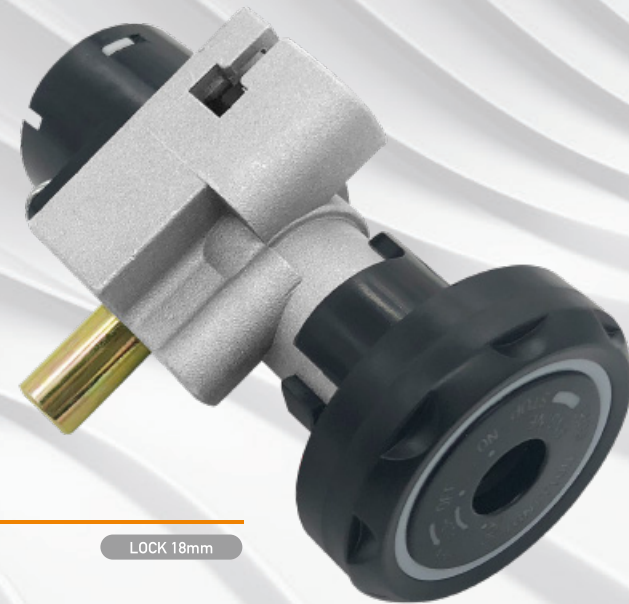
LOCK 12mm



STD-015
LOCKS SERIES

巧格一键启动

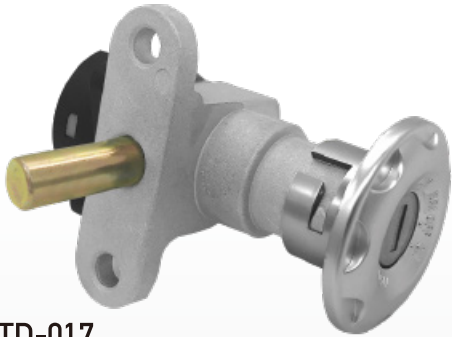
LOCK 28mm



STD-016
LOCKS SERIES

步步高一键启动

LOCK 18mm



STD-017
LOCKS SERIES

老百姓金龟王单锁
大飞跃（悍马）单锁

LOCK 21mm
LOCK 47mm



STD-018
LOCKS SERIES

尊豪单锁

LOCK 37mm



STD-019
LOCKS SERIES

小帅哥单锁

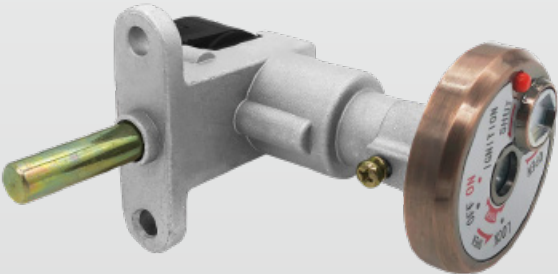
LOCK 12mm



STD-020
LOCKS SERIES

宝马530单锁
标旗单锁
大凌鹰单锁

LOCK 20mm
LOCK 26mm
LOCK 50mm



STD-021
LOCKS SERIES

大凌鹰防盗单锁

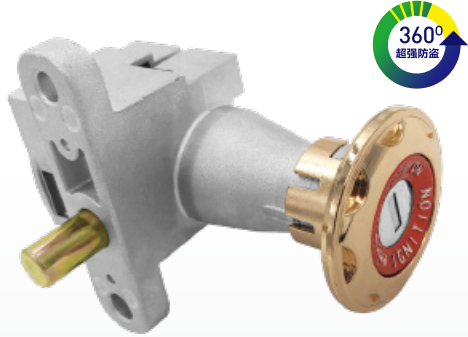
LOCK 50mm



STD-022
LOCKS SERIES

悍将单锁

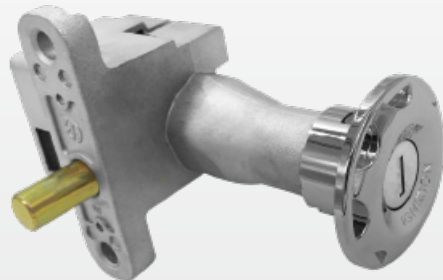
LOCK 38mm



STD-023
LOCKS SERIES

小龟王单锁
巧格单锁
雷霆王单锁

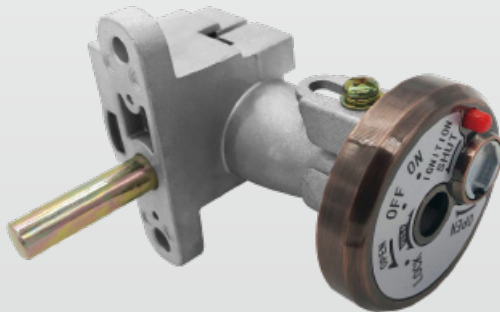
LOCK 18mm
LOCK 28mm
LOCK 45mm



STD-025
LOCKS SERIES

三阳巧格单锁

LOCK 27mm



STD-027
LOCKS SERIES

好格(GTR)单锁

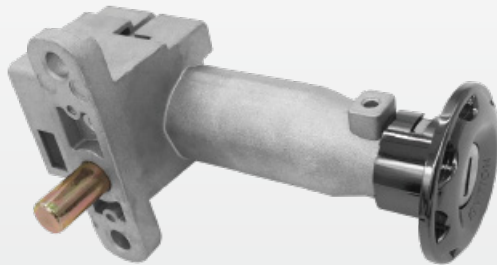
LOCK 54mm



STD-024
LOCKS SERIES

二代巧格单锁

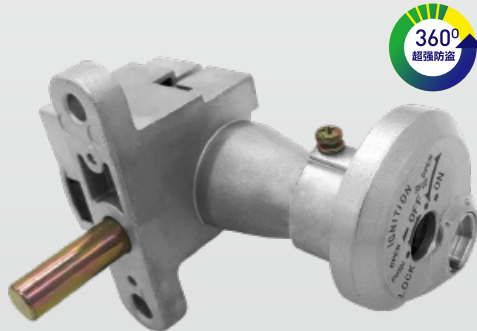
LOCK 28mm



STD-026
LOCKS SERIES

大红鹰单锁

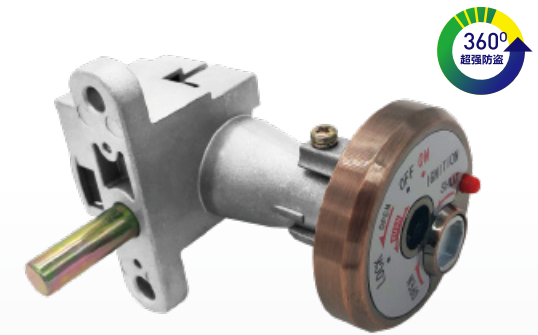
LOCK 27mm



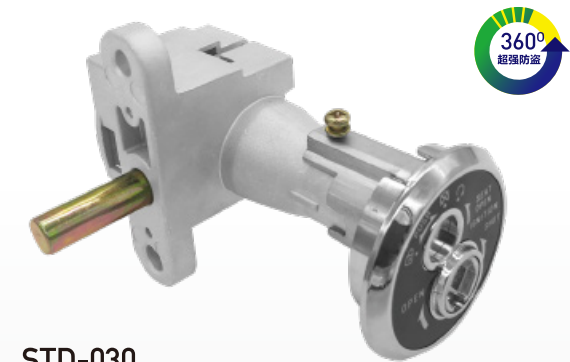
STD-028
LOCKS SERIES

小鬼火单锁
战速单锁

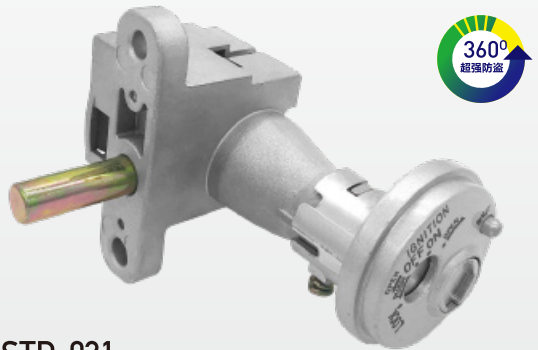
LOCK 28mm
LOCK 39mm



STD-029
LOCKS SERIES
宇钻单锁
LOCK 60mm



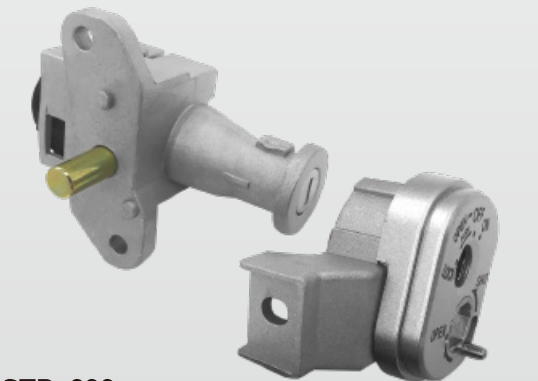
STD-030
LOCKS SERIES
晶钻单锁
LOCK 40mm



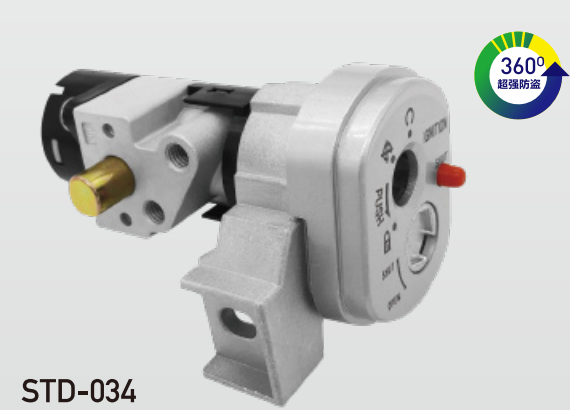
STD-031
LOCKS SERIES
小卫士单锁
LOCK 27mm



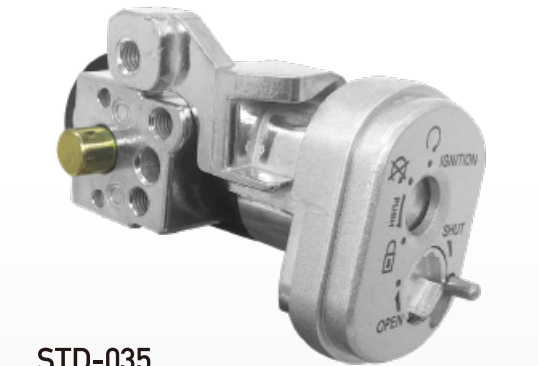
STD-032
LOCKS SERIES
雅马哈防盗单锁
LOCK 25mm



STD-033
LOCKS SERIES
三阳瑞御单锁
LOCK 25mm



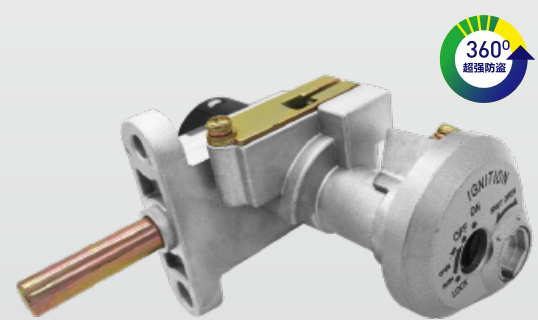
STD-034
LOCKS SERIES
追梦单锁(短)
追梦单锁(中)
追梦单锁(长)
LOCK 11mm
LOCK 24mm
LOCK 38mm



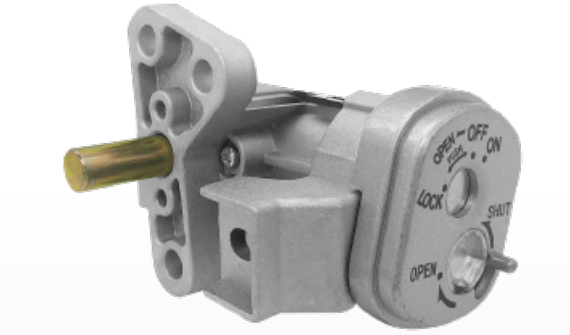
STD-035
LOCKS SERIES
旗舰单锁
LOCK 16mm



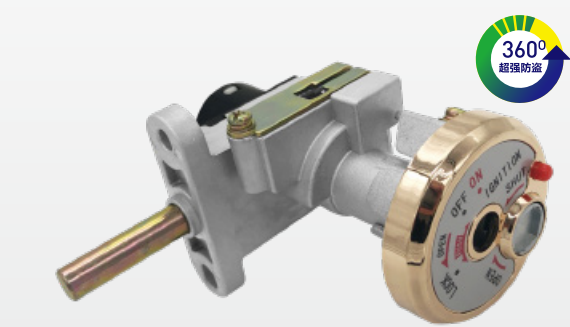
STD-037
LOCKS SERIES
战警单锁
LOCK 21mm



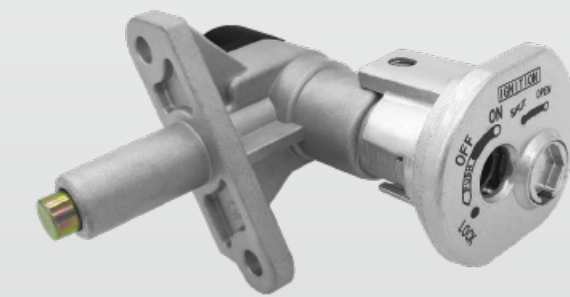
STD-039
LOCKS SERIES
B型迅鹰单锁
LOCK 50mm



STD-036
LOCKS SERIES
大优悦单锁
LOCK 22mm

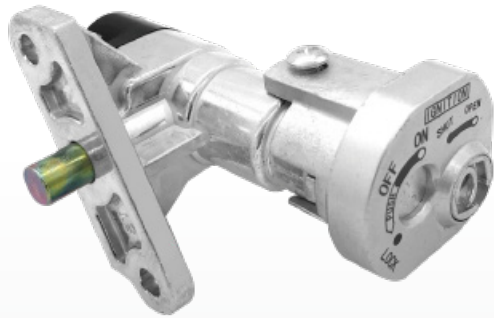


STD-038
LOCKS SERIES
A型迅鹰单锁
LOCK 50mm



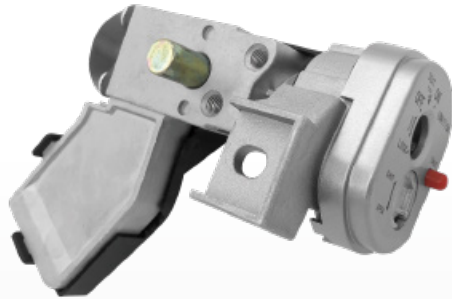
STD-040
LOCKS SERIES
路虎单锁
LOCK 48mm

FOCUS ON LOCK DESIGN
AND MANUFACTURE
专注锁具设计与制造



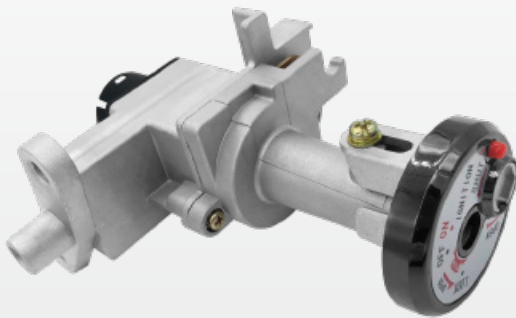
STD-041
LOCKS SERIES
领航者单锁

LOCK 21mm



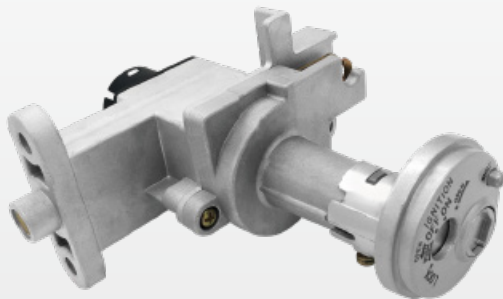
STD-042
LOCKS SERIES
佳御单锁

LOCK 45mm



STD-043
LOCKS SERIES
火鹰单锁

LOCK 23mm



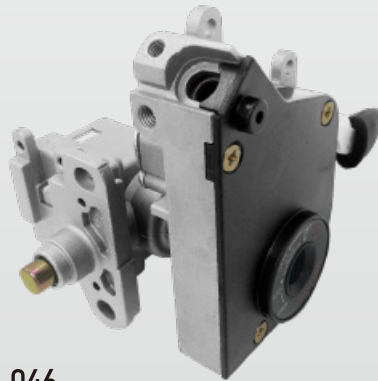
STD-044
LOCKS SERIES
红宝单锁

LOCK 23mm



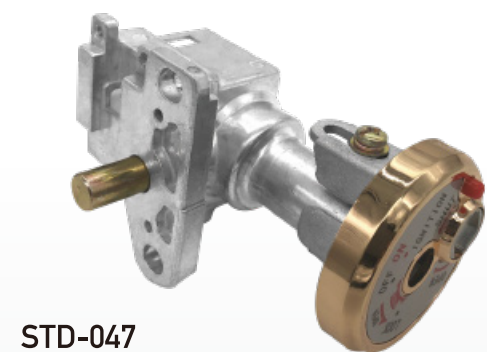
STD-045
LOCKS SERIES
A型大鬼火单锁

LOCK 18mm



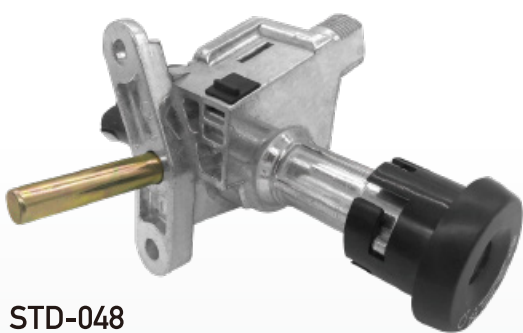
STD-046
LOCKS SERIES
B型大鬼火单锁

LOCK 32mm



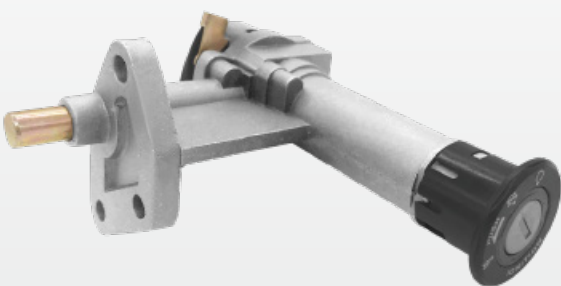
STD-047
LOCKS SERIES
熊猫单锁

LOCK 32mm



STD-048
LOCKS SERIES
晶鹰单锁

LOCK 59mm



STD-049
LOCKS SERIES
猎鹰单锁

LOCK 34mm



STD-050
LOCKS SERIES
流行骑士（小蚂蚁）

LOCK 9mm



STD-051
LOCKS SERIES
电瓶锁

LOCKS SERIES
小锁系列



LOCKS SERIES
锁板系列





STM-001
LOCKS SERIES
五羊点火+雅马哈油箱



STM-002
LOCKS SERIES
五羊125二锁+CG头盔锁



STM-003
LOCKS SERIES
五羊WY125套锁



STM-010
LOCKS SERIES
本田王CBT125套锁



STM-011
LOCKS SERIES
五角CG125套锁（金丝猫）



STM-004
LOCKS SERIES
幸福XF125套锁



STM-005
LOCKS SERIES
铃木王GS125套锁



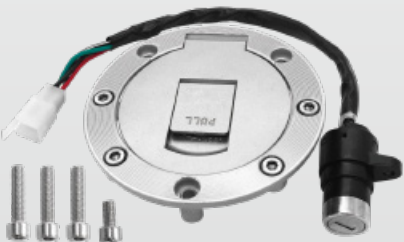
STM-006
LOCKS SERIES
铃木太子GN125套锁



STM-012
LOCKS SERIES
小忍者套锁



STM-013
LOCKS SERIES
美式太子套锁



STM-007
LOCKS SERIES
70点火+雅马哈油箱



STM-008
LOCKS SERIES
EN125套锁



STM-009
LOCKS SERIES
CG125三锁+雅马哈油箱



STM-014
LOCKS SERIES
改型铃木王GS125套锁